

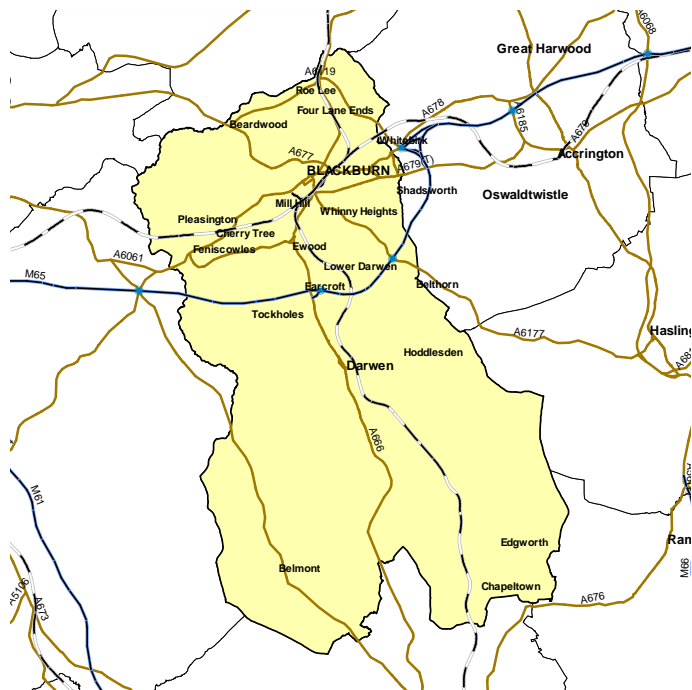
Blackburn with Darwen

This is a Spearhead area

This profile gives a snapshot of health in your area. With other local information, this Health Profile has been designed to support action by local government and primary care trusts to tackle health inequalities and improve people's health.

Health Profiles are funded by the Department of Health and produced annually by the Association of Public Health Observatories.

To view Health Profiles for other local authorities and to find out how they were produced, visit www.healthprofiles.info



POPULATION 141,000

Based on Ordnance Survey material. © Crown Copyright. All rights reserved. DH 100020290 2008. Other map data © Collins Bartholomew.

Blackburn with Darwen at a glance

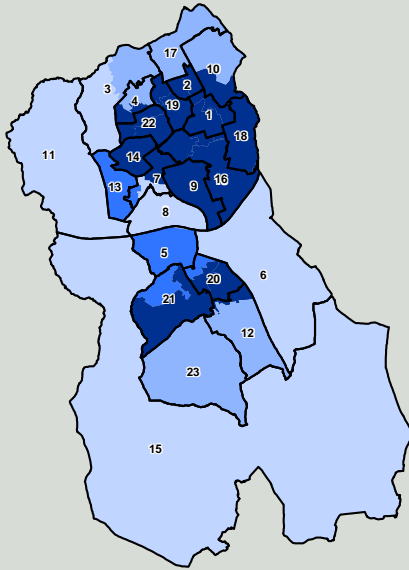
- The health of people in Blackburn with Darwen is generally worse than the England average, including children's tooth decay, hospital stays related to alcohol, deaths from smoking and early deaths from cancer. Some indicators are similar to, or are better than, the England average. For example, the rate of infant deaths is similar to the England average.
- There are health inequalities by gender, level of deprivation and ethnicity. For example, men from the most deprived areas have over eight years shorter life expectancy than men from the least deprived areas, and women from the most deprived areas live nearly six years less than those from the least deprived areas.
- Over the last ten years there has been a large decrease in the early death rate from heart disease and stroke. However, the rate remains above the England average.
- Life expectancy for both men and women is significantly worse than the England average. Male life expectancy is the fifth worst in England.
- The percentage of mothers who initiate breast feeding is significantly better than the England average.
- Local health and wellbeing priorities can be found in Blackburn with Darwen's Local Area Agreement at www.blackburn.gov.uk
- The Blackburn with Darwen Annual Public Health Report provides further detail on the health of this area and is available at www.bwdpct.nhs.uk

Deprivation: a national perspective

This map shows differences in deprivation between small areas in this local authority, *compared to the whole of England* (based on IMD 2007).

National deprivation groups

- 1 Least deprived fifth of areas in England
- 2
- 3
- 4
- 5 Most deprived fifth of areas in England



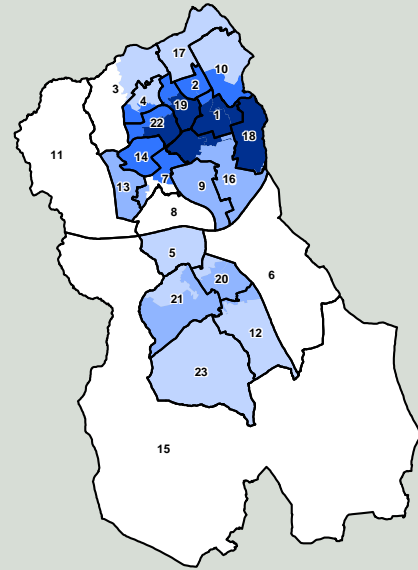
Based on Ordnance Survey material. © Crown Copyright. All rights reserved. DH 1000.20.290 2008

Deprivation: a local perspective

This map shows differences in deprivation between small areas in this local authority, *compared to the local authority as a whole* (based on IMD 2007).

Local deprivation groups

- 1 Least deprived fifth in this local authority
- 2
- 3
- 4
- 5 Most deprived fifth in this local authority



Based on Ordnance Survey material. © Crown Copyright. All rights reserved. DH 1000.20.290 2008

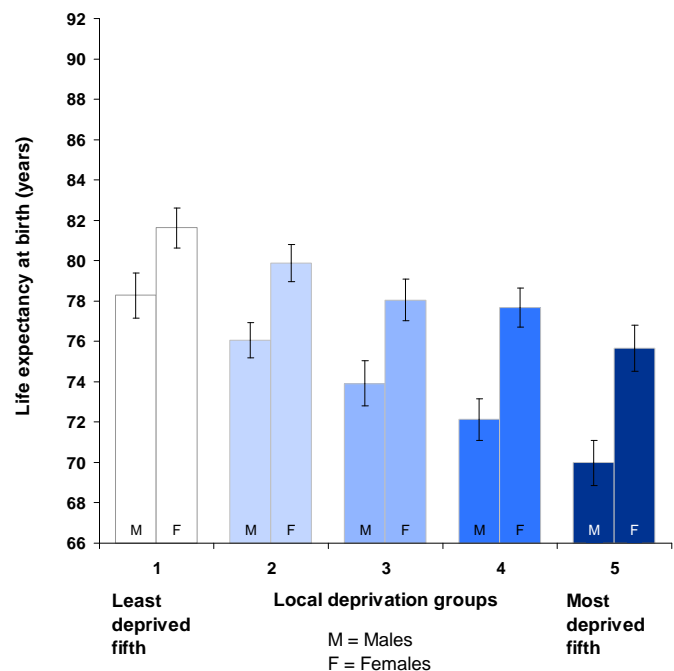
Ward legend

- 1 Audley
- 2 Bastwell
- 3 Beardwood with Lammack
- 4 Corporation Park
- 5 Earcroft
- 6 East Rural
- 7 Ewood
- 8 Fernhurst
- 9 Higher Croft
- 10 Little Harwood
- 11 Livesey with Pleasington
- 12 Marsh House
- 13 Meadowhead
- 14 Mill Hill
- 15 North Turton with Tockholes
- 16 Queen's Park
- 17 Roe Lee
- 18 Shadsworth with Whitebirk
- 19 Shear Brow
- 20 Sudell
- 21 Sunnyhurst
- 22 Wensley Fold
- 23 Whitehall

Ward boundaries 2005 are superimposed upon MSA (Middle Super Output Area) boundaries. Each MSA is shaded by Index of Multiple Deprivation (IMD) 2007. For details refer to www.communities.gov.uk. Numbers correspond to ward legend. Ward boundaries may have changed.

Health inequalities: a local perspective

Inequalities in life expectancy (2002-2006) for men and women who live in areas with different levels of deprivation (within this local authority).



95% confidence interval. These indicate the level of uncertainty about each value on the graph. Longer/wider intervals mean more uncertainty. When two intervals do not overlap it is reasonably certain that the two groups are truly different.

Health inequalities: changes over time

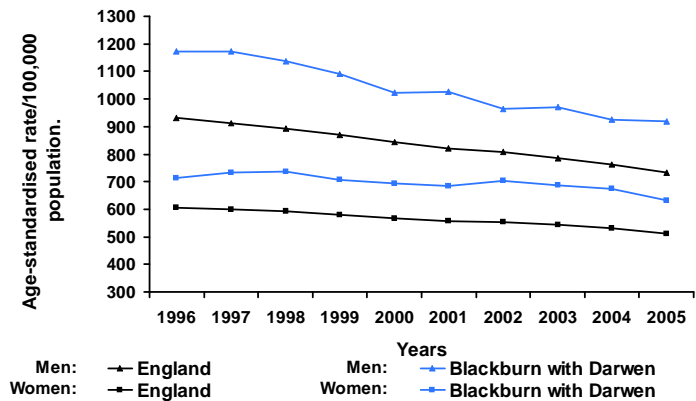
These trend graphs show how changes in health for this local authority compare with changes for the whole of England. Data points are mid-points of 3 year moving averages of annual rates i.e. 1996 represents the 3 year period 1995-97.

Trend 1 compares death rates (at all ages and from all causes) in this local authority with those for England.

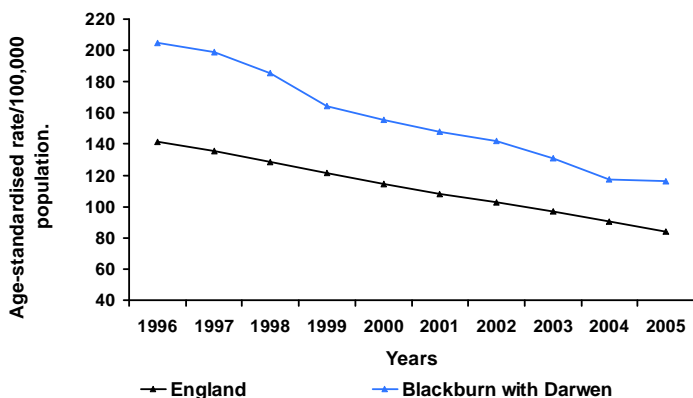
Trend 2 compares rates of early death from heart disease and stroke (in people under 75) in this local authority with those for England.

Trend 3 compares rates of early death from cancer (in people under 75) in this local authority with those for England.

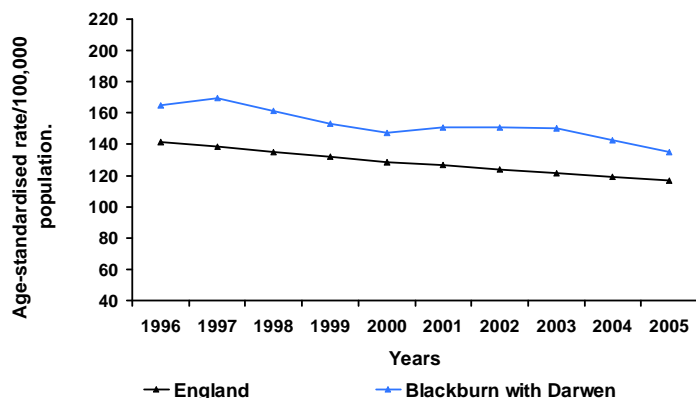
Trend 1: All age, all cause mortality



Trend 2: Early death rates from heart disease and stroke



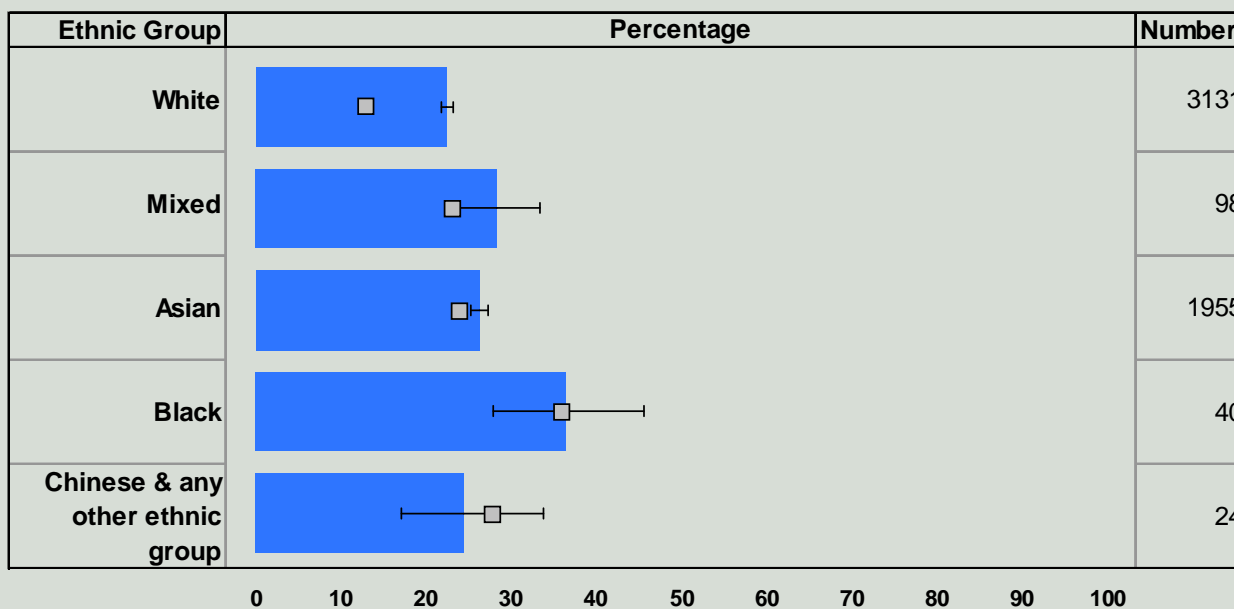
Trend 3: Early death rates from cancer



Health inequalities: ethnicity

This chart compares the percentage of children in each ethnic group who are eligible for free school meals (2007). Eligibility for free school meals is an indicator of deprivation, and people who suffer more deprivation tend to have poorer health. Comparing deprivation by ethnic group helps identify potential health inequalities between groups.

Percentage and number of children eligible for free school meals



Where the total school population in an ethnic group in the local authority is less than 30, no data have been presented and the number column shows n/a. Where the number is less than 5, no percentage is shown.

Legend:
 England - average
 Blackburn with Darwen

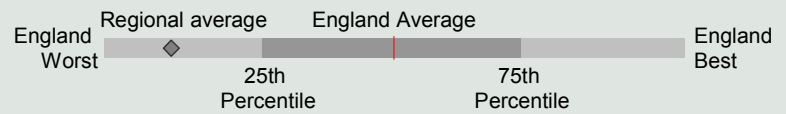
Confidence intervals are shown for local data

Health summary for Blackburn with Darwen

The chart below shows how people's health in this local authority compares to the rest of England. The local result for each indicator is shown as a circle, against the range of results for England which is shown as a bar. A green circle may still indicate an important public health problem.

- Significantly worse than England average
- Not significantly different from England average
- Significantly better than England average
- No significance can be calculated

* relates to National Indicator 2007



Domain	Indicator	Local No. Per Year	Local Value	Eng Avg	Eng Worst	England Range	Eng Best
Our communities	1 Deprivation	73267	51.9	19.9	89.2	[Bar chart showing Blackburn with Darwen significantly worse than England average]	0.0
	2 Children in poverty *	11403	33.1	22.4	66.5	[Bar chart showing Blackburn with Darwen significantly worse than England average]	6.0
	3 Statutory homelessness	190	3.4	4.4	14.4	[Bar chart showing Blackburn with Darwen significantly better than England average]	0.0
	4 GCSE achievement (5 A*-C) *	1153	59.9	60.1	35.8	[Bar chart showing Blackburn with Darwen not significantly different from England average]	82.7
	5 Violent crime	2973	21.2	19.3	38.9	[Bar chart showing Blackburn with Darwen significantly worse than England average]	4.5
	6 Carbon emissions *	1165	8.5	7.6	20.6	[Bar chart showing Blackburn with Darwen not significantly different from England average]	4.6
Children and young people's health	7 Smoking in pregnancy	510	20.7	16.1	38.8	[Bar chart showing Blackburn with Darwen significantly worse than England average]	4.4
	8 Breast feeding initiation *	1750	71.5	69.2	33.2	[Bar chart showing Blackburn with Darwen significantly better than England average]	90.9
	9 Physically active children *	19152	88.5	85.7	63.3	[Bar chart showing Blackburn with Darwen significantly better than England average]	99.2
	10 Obese children *	161	9.7	9.9	16.1	[Bar chart showing Blackburn with Darwen not significantly different from England average]	4.9
	11 Children's tooth decay (at age 5)	n/a	3.2	1.5	3.2	[Bar chart showing Blackburn with Darwen significantly worse than England average]	0.4
	12 Teenage pregnancy (under 18) *	157	47.2	41.1	83.1	[Bar chart showing Blackburn with Darwen significantly worse than England average]	12.5
Adults' health and lifestyle	13 Adults who smoke *	n/a	26.9	24.1	40.9	[Bar chart showing Blackburn with Darwen not significantly different from England average]	13.7
	14 Binge drinking adults	n/a	20.7	18.0	28.9	[Bar chart showing Blackburn with Darwen not significantly different from England average]	9.7
	15 Healthy eating adults	n/a	19.6	26.3	14.2	[Bar chart showing Blackburn with Darwen significantly worse than England average]	45.8
	16 Physically active adults	n/a	8.1	11.6	7.5	[Bar chart showing Blackburn with Darwen significantly worse than England average]	17.2
	17 Obese adults	n/a	26.7	23.6	31.2	[Bar chart showing Blackburn with Darwen significantly worse than England average]	11.9
Disease and poor health	18 Under-15s 'not in good health'	444	13.9	11.6	20.8	[Bar chart showing Blackburn with Darwen significantly worse than England average]	6.4
	19 Incapacity benefits for mental illness *	4330	50.5	27.5	68.6	[Bar chart showing Blackburn with Darwen significantly worse than England average]	8.4
	20 Hospital stays related to alcohol *	625	455.7	260.3	741.1	[Bar chart showing Blackburn with Darwen significantly worse than England average]	87.6
	21 Drug misuse	1534	17.1	9.9	34.9	[Bar chart showing Blackburn with Darwen significantly worse than England average]	1.3
	22 People diagnosed with diabetes	6150	4.4	3.7	5.9	[Bar chart showing Blackburn with Darwen significantly worse than England average]	2.1
	23 Sexually transmitted infections					[Bar chart showing Blackburn with Darwen not significantly different from England average]	
	24 New cases of tuberculosis	58	41.0	15.0	102.0	[Bar chart showing Blackburn with Darwen significantly worse than England average]	0.0
	25 Hip fracture in over-65s	104	480.2	479.8	699.8	[Bar chart showing Blackburn with Darwen not significantly different from England average]	219.0
Life expectancy and causes of death	26 Life expectancy - male *	n/a	74.2	77.3	73.0	[Bar chart showing Blackburn with Darwen significantly worse than England average]	83.1
	27 Life expectancy - female *	n/a	79.2	81.6	78.3	[Bar chart showing Blackburn with Darwen significantly worse than England average]	87.2
	28 Infant deaths	14	6.0	5.0	10.3	[Bar chart showing Blackburn with Darwen not significantly different from England average]	0.0
	29 Deaths from smoking	253	307.8	225.4	355.0	[Bar chart showing Blackburn with Darwen significantly worse than England average]	139.4
	30 Early deaths: heart disease & stroke *	150	115.9	84.2	142.4	[Bar chart showing Blackburn with Darwen significantly worse than England average]	39.7
	31 Early deaths: cancer *	173	135.2	117.1	167.8	[Bar chart showing Blackburn with Darwen significantly worse than England average]	76.7
	32 Road injuries and deaths *	75	52.9	56.3	194.6	[Bar chart showing Blackburn with Darwen not significantly different from England average]	20.8

Note (numbers in bold refer to the above indicators)

1 % of people in this area living in 20% most deprived areas of England 2005 2 % of children living in families receiving means-tested benefits 2005 3 Crude rate per 1,000 households 2005-2006 4 % at Key Stage 4 2006-2007 5 Recorded violence against the person crimes (crude rate per 1,000 population) 2006-2007 6 Total end user CO2 emissions per capita (tonnes CO2 per resident) 2005 7 % of mothers smoking in pregnancy where status is known 2006-2007 8 % of mothers initiating breast feeding where status known 2006-2007 9 % 5-16 year olds who spend at least 2 hrs/wk on high quality PE and school sport 2006-2007 10 % Schoolchildren in Reception year. 2006-2007 11 Average (mean) number of teeth per child which were actively decayed, filled, or had been extracted (age 5) 2005-2006 12 Under-18 conception rate per 1,000 females (crude rate) 2004-2006 (provisional) 13 % Modelled estimate from Health Survey for England. 2003-2005 14 % Modelled estimate from Health Survey for England. 2003-2005 15 % Modelled estimate from Health Survey for England. 2003-2005 16 % aged 16+ 2005/06 17 % Modelled estimate from Health Survey for England. 2003-2005 18 % who self assessed general health as 'not good' (directly age standardised) 2001 19 Crude rate per 1,000 working age population. 2006 20 Directly age and sex standardised rate per 100,000 pop. 2006-2007 21 Crude rate per 1000 population aged 15-64. No significance calculated for lower tier authorities. 2004-2005 22 % of people on GP registers with a recorded diagnosis of diabetes. 2005-2006 23 Indicator blank as data not yet available for local authorities. 24 Per 100,000 population (3-year average crude rate) 2004-2006 25 Directly age-standardised rate for emergency admission 2006/07 26 At birth, years 2004-2006 27 At birth, years 2004-2006 28 Rate /1,000 live births 2004-06 29 Per 100,000 population age 35+, directly age standardised rate. 2004-2006 30 Directly age standardised rate/100,000 pop. under 75 2004-2006 31 Directly age standardised rate/100,000 pop. under 75 2004-2006 32 Per 100,000 population (3-year average crude rate) 2004-2006

For more information from your regional PHO, visit www.apho.org.uk

You may use this profile for non-commercial purposes provided the source is acknowledged. 'Source: APHO and Department of Health. © Crown Copyright 2008.'